



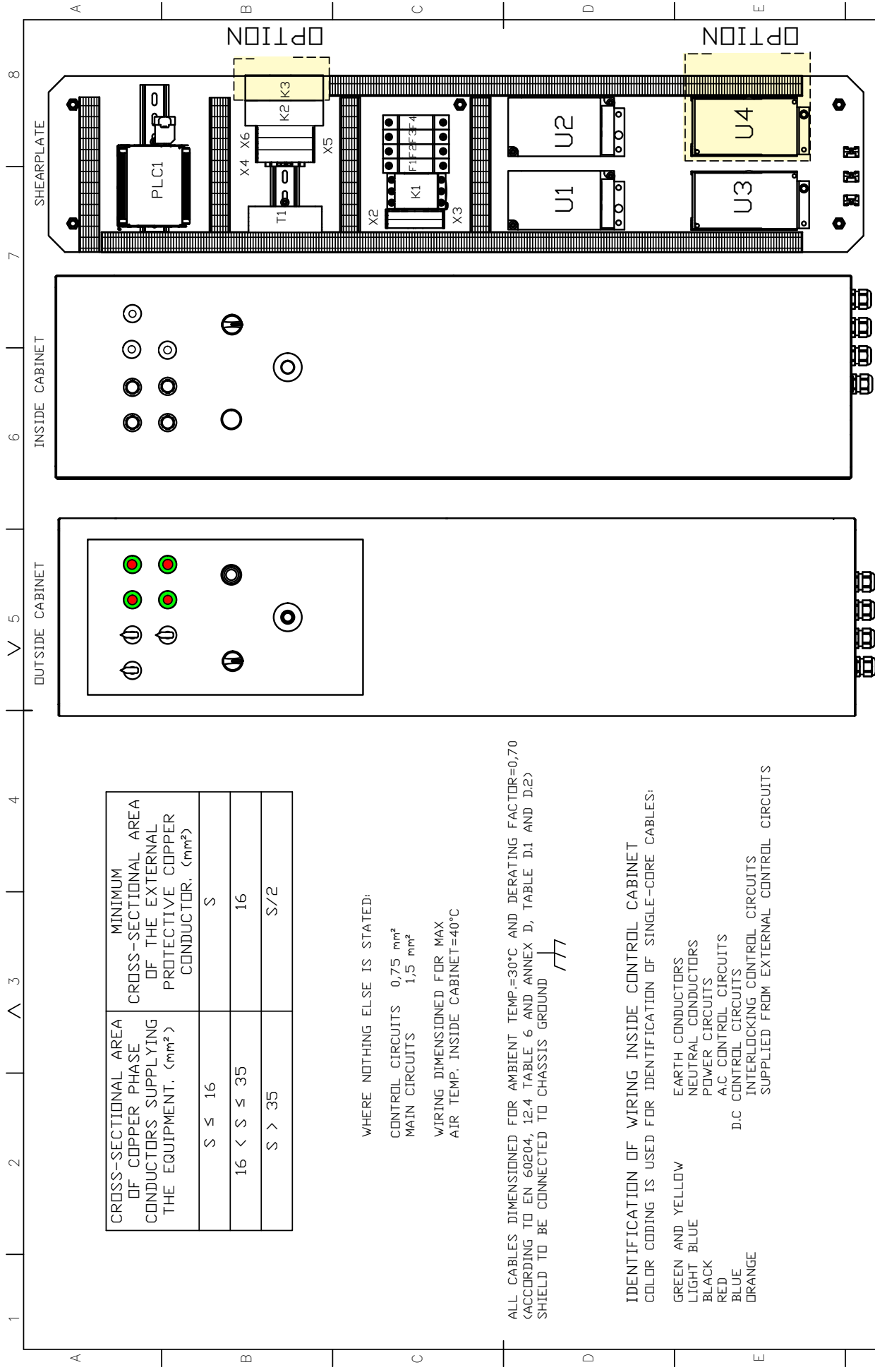
Wiring Diagram  
**CTT 210**

rev. B

DI-ZET

Praktyczne rozwiązania w systemach pakowania





| CROSS-SECTIONAL AREA OF COPPER PHASE CONDUCTORS SUPPLYING THE EQUIPMENT. (mm <sup>2</sup> ) | MINIMUM CROSS-SECTIONAL AREA OF THE EXTERNAL PROTECTIVE COPPER CONDUCTOR. (mm <sup>2</sup> ) |
|---|--|
| S ≤ 16  | S  |
| 16 < S ≤ 35   | 16   |
| S > 35  | S/2  |

WHERE NOTHING ELSE IS STATED:  
 CONTROL CIRCUITS 0,75 mm<sup>2</sup>  
 MAIN CIRCUITS 1,5 mm<sup>2</sup>  
 WIRING DIMENSIONED FOR MAX AIR TEMP. INSIDE CABINET=40°C

ALL CABLES DIMENSIONED FOR AMBIENT TEMP.=30°C AND DERATING FACTOR=0,70 (ACCORDING TO EN 60204, 12.4 TABLE 6 AND ANNEX D, TABLE D.1 AND D.2)  
 SHIELD TO BE CONNECTED TO CHASSIS GROUND

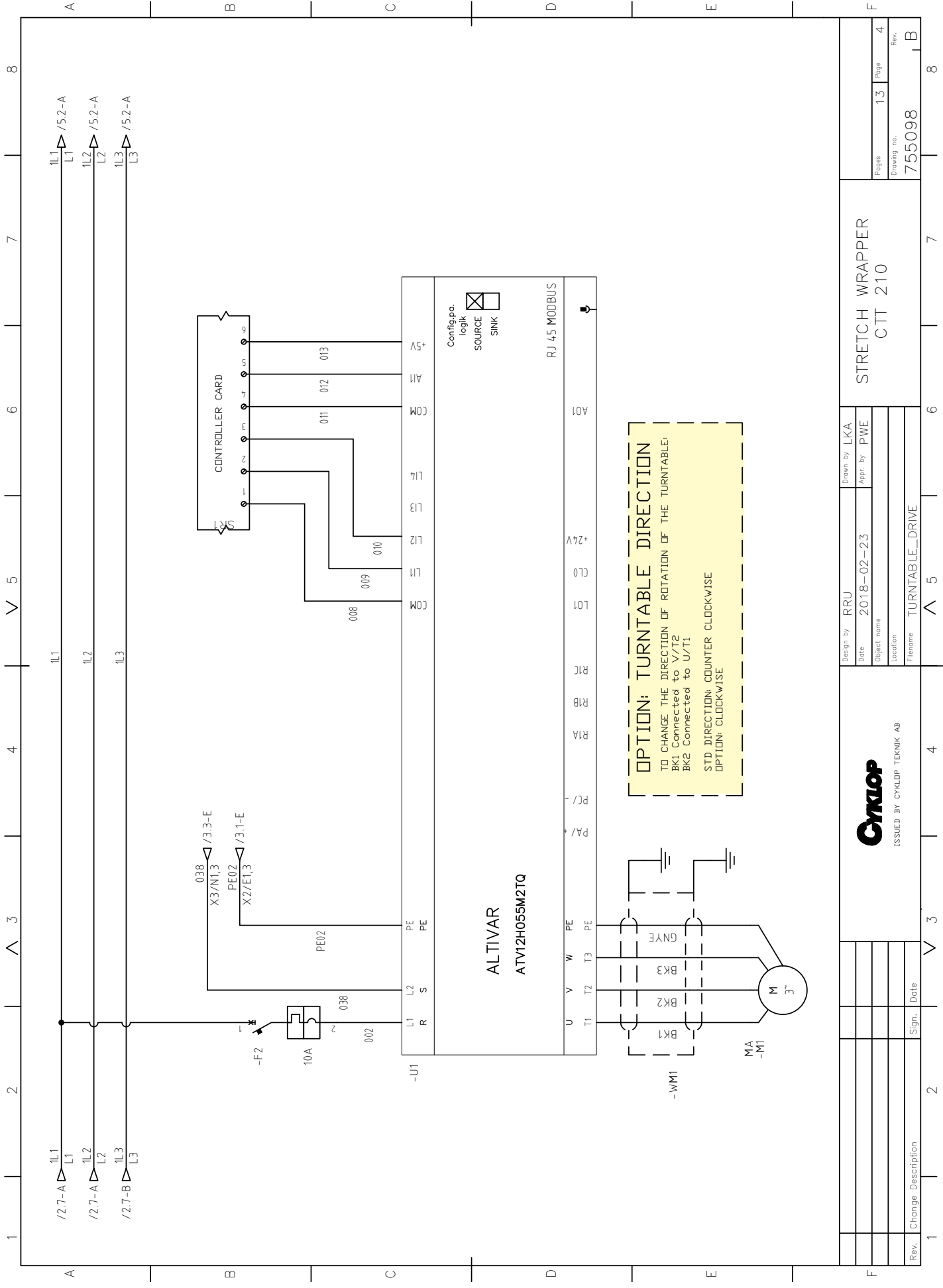
IDENTIFICATION OF WIRING INSIDE CONTROL CABINET  
 COLOR CODING IS USED FOR IDENTIFICATION OF SINGLE-CORE CABLES:

- GREEN AND YELLOW EARTH CONDUCTORS
  - LIGHT BLUE NEUTRAL CONDUCTORS
  - BLACK POWER CIRCUITS
  - RED A.C CONTROL CIRCUITS
  - BLUE D.C CONTROL CIRCUITS
  - ORANGE INTERLOCKING CONTROL CIRCUITS
- SUPPLIED FROM EXTERNAL CONTROL CIRCUITS

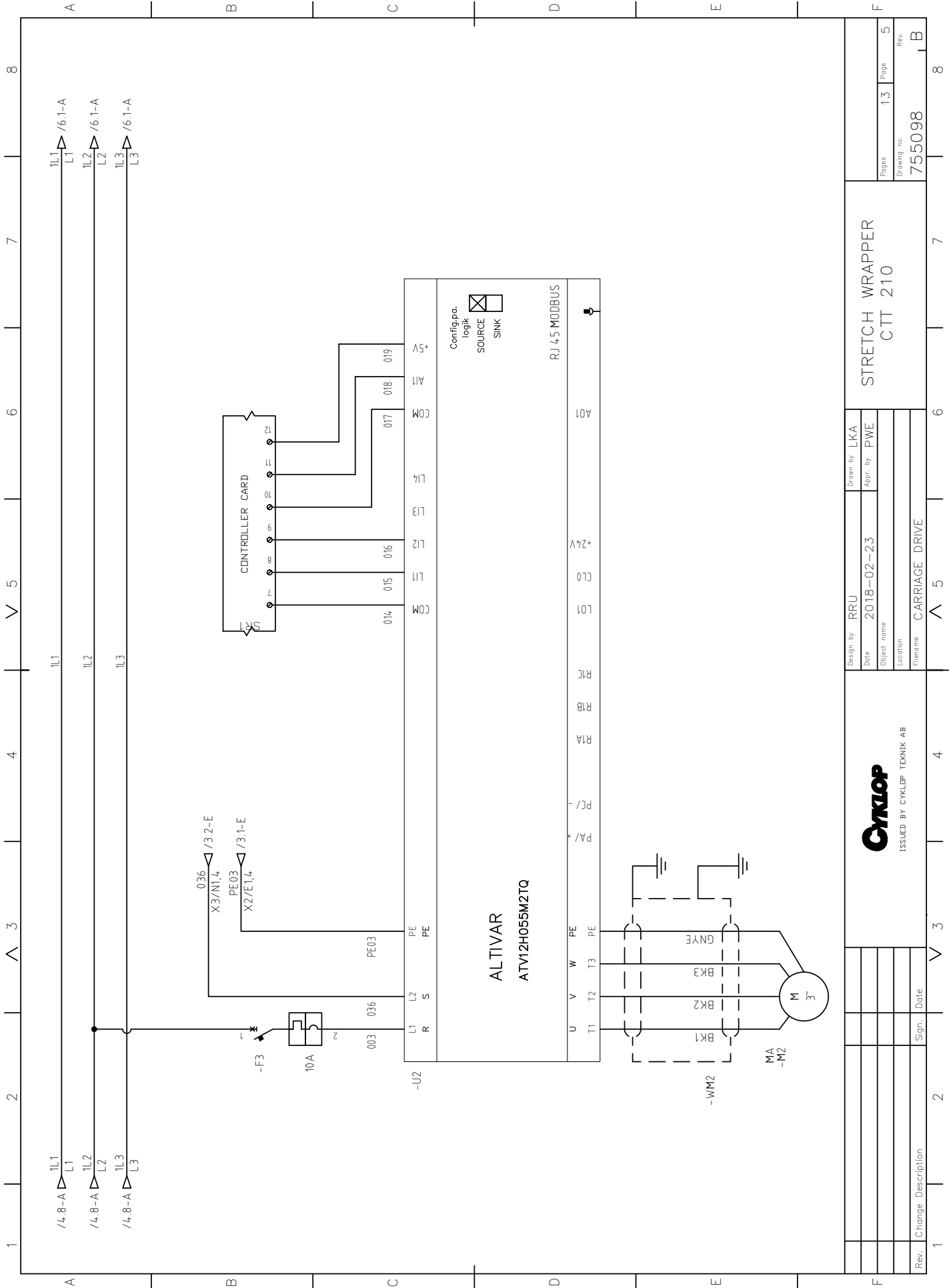
|           |                    |                            |      |                 |
|-----------|--------------------|----------------------------|------|-----------------|
|           | <b>Cykolop</b>     | ISSUED BY CYKLOP TEKNIK AB |      |                 |
| Design by | RRU                | Drawn by                   | LKA  | Stretch Wrapper |
| Date      | 2018-02-23         | Appr. by                   | PWE  | CTT 210         |
| Company   |                    | Company                    |      | Pages           |
| Filename  | CABINET_LAYOUT     | Company Loc.               |      | 13              |
| Rev.      | Change Description | Sign.                      | Date | Page            |
|           |                    |                            |      | 1               |
|           |                    |                            |      | Rev.            |
|           |                    |                            |      | 755098          |
|           |                    |                            |      | Loc.            |
|           |                    |                            |      | B               |







|  |        |                    |        |
|--|--------|--------------------|--------|
| Rev. Change Description                      |        | Sign. Date         |        |
| 1  |        |                    |        |
| <b>Cyklop</b><br>ISSUED BY CYKLOP TECHNIK AB |        |                    |        |
| Design by RRU                                |        | Drawn by LKA       |        |
| Date 2018-02-23                              |        | Appr. by PWE       |        |
| Subject name                                 |        | Location           |        |
| Filename TURNTABLE_DRIVE                     |        | Section            |        |
| STRETCH WRAPPER                              |        | C.TT 210           |        |
| Pages 13                                     | Page 4 | Drawing no. 755098 | Rev. B |



|             |                |          |     |
|-------------|----------------|----------|-----|
| Design by   | RRU            | Drawn by | LKA |
| Date        | 2018-02-23     | Appr. by | PWE |
| Object name |                | Location |     |
| Filename    | CARRIAGE DRIVE |          |     |

STRETCH WRAPPER  
 CTT 210

|             |        |      |   |
|-------------|--------|------|---|
| Pages       | 13     | Page | 5 |
| Drawing no. | 755098 | Rev. | B |



| Rev. | Change Description | Sign. | Date |
|------|--------------------|-------|------|
|      |                    |       |      |
|      |                    |       |      |
|      |                    |       |      |

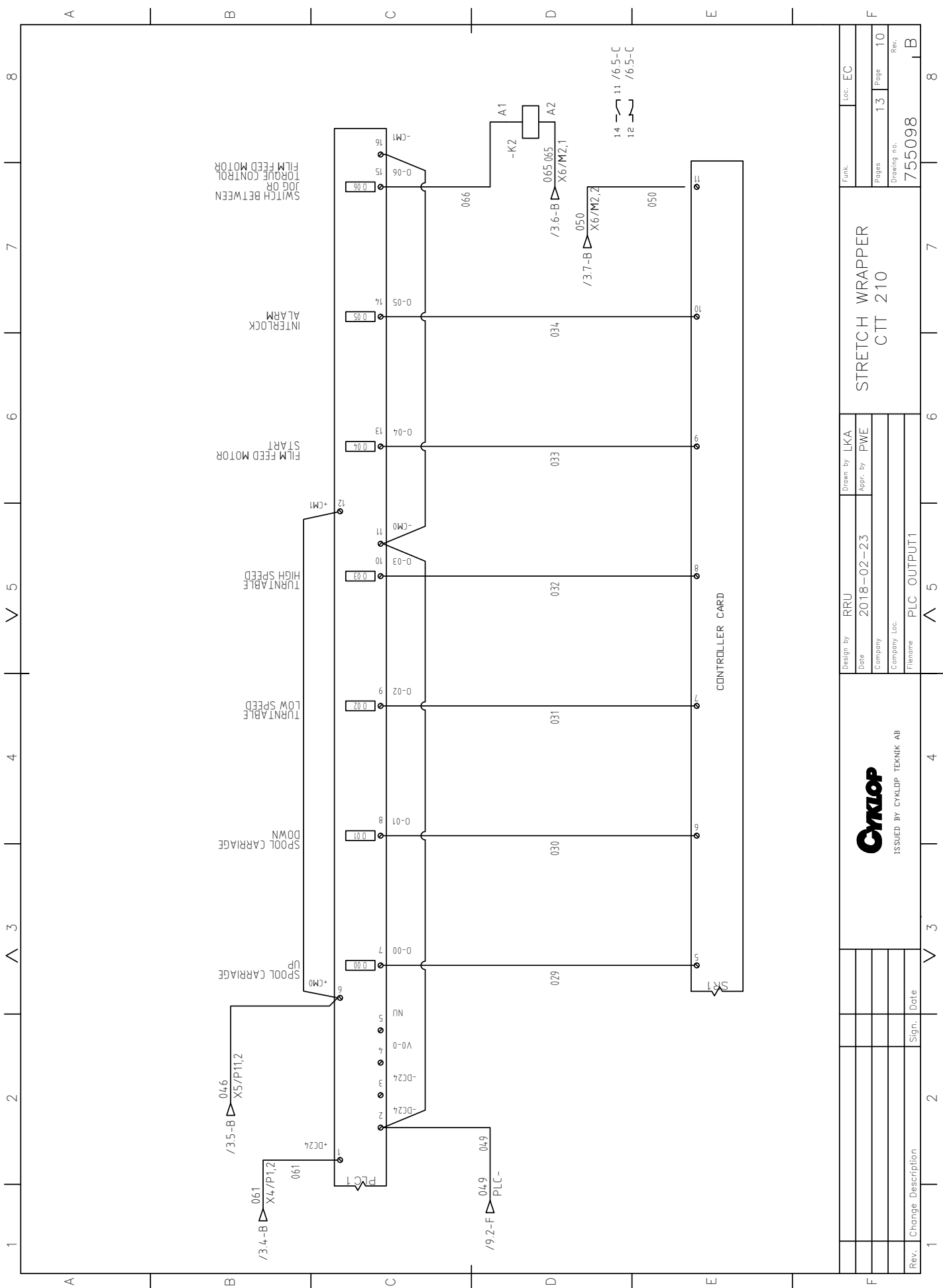














|  |  |              |         |                    |  |
|--|--|--------------|---------|--------------------|--|
| Rev. Change Description  |  | Sign.        |         | Date               |  |
|  |  |              |         |                    |  |
| <br>ISSUED BY CYKLOP TECHNIK AB |  |              |         |                    |  |
| Design by RRU  |  | Drawn by LKA |         | Funk. Loc. EC      |  |
| Date 2018-02-23  |  | Appr. by PWE |         | Pages 13 Page 10   |  |
| Company  |  | Company Loc. |         | Drawing no. 755098 |  |
| Filename PLC_OUTPUT1   |  |              |         | Rev. B             |  |
| STRETCH WRAPPER  |  |              | CIT 210 |                    |  |




| 1     | 2   | 3      | 4       | 5   | 6   | 7               | 8               |       |     |
|-------|-----|--------|---------|-----|---|-----------------|-----------------|-------|-----|
| TAGS  | LOC | INST   | PART NO | QTY | DESCRIPTION   | CAT             | MANUFACTURER    | SHEET | REF |
| -B1   | EC  | HEATER | 901414  | *1  | THERMOSTAT NC   | 2579847         | SCHNEIDER       | 2     | 3-E |
| -F1   | EC  |        | 901049  | *1  | CIRCUIT BREAKER, C60N, 1P   | 24309           | SCHNEIDER       | 2     | 4-B |
| -F2   | EC  |        | 901050  | *1  | CIRCUIT BREAKER, C60N, 1P   | 24310           | SCHNEIDER       | 4     | 2-B |
| -F3   | EC  |        | 901050  | *1  | CIRCUIT BREAKER, C60N, 1P   | 24310           | SCHNEIDER       | 5     | 2-B |
| -F4   | EC  |        | 901050  | *1  | CIRCUIT BREAKER, C60N, 1P   | 24310           | SCHNEIDER       | 6     | 2-B |
| -F5   | EC  | TP     | 901050  | *1  | CIRCUIT BREAKER, C60N, 1P   | 24310           | SCHNEIDER       | 7     | 2-B |
| -F10  | EC  | HEATER | 901049  | *1  | CIRCUIT BREAKER, C60N, 1P   | 24309           | SCHNEIDER       | 2     | 3-B |
| -H1   | EC  |        | 901260  | *1  | BODY FOR PILOT LIGHT - ZB5 - WHITE INTEGRAL LED - 24V                     | ZBVB15          | SCHNEIDER       | 2     | 5-D |
| -K1   | EC  |        | 901337  | *1  | CONTACTOR TESYS LC1-D - 3P - AC-3 440V 9A - COIL 24VDC                    | LC1D093BL       | SCHNEIDER       | 2     | 6-D |
| -PLC1 | EC  |        | 901638  | *1  | MICROCONTROLLER 820   | 2080-LC20-20QBB | ALLEN-BRADLEY   | 8     | 1-C |
| -PLC2 | EC  | TP     | 901641  | *1  | 8-POINT DIGITAL COMBINATION MODULE  | 2080-IQ40B4     | ALLEN-BRADLEY   | 11    | 2-D |
| -R1   | EC  | HEATER | 901724  | *1  | CLIMASYS PTC HEATING RESISTANCE 50W                                       | NSYCR50WUC2     | SCHNEIDER       | 2     | 3-C |
| -S1   | EC  |        | 910051  | *1  | EMERGENCY STOP BUTTON   | 910051          | SCHNEIDER       | 2     | 6-B |
| -S3   | EC  |        | 910101  | *1  | POWER ON  | 910101          | CYKLOP          | 2     | 6-D |
| -S10  | EC  |        | 910053  | *1  | PUSH BUTTON GREEN   | 910053          | SCHNEIDER       | 8     | 5-C |
| -S20  | EC  | TP     | 910121  | *1  | ON/OFF 2POS   | 910121          | SCHNEIDER       | 11    | 2-D |
| -SR1  | EC  |        | 901634  | *1  | CONTROLLER CARD   | 901634          | CYKLOP          | 6     | 4-B |
| -T1   | EC  |        | 901644  | *1  | CONTROLLER CARD   | 375666          | OMRON           | 2     | 4-C |
| -U1   | EC  |        | 901643  | *1  | FREQUENCY CONVERTER, ATV12, 1-PHASE, 200-240VAC, WITH EMC FILTER          | ATV12H055M2TQ   | SCHNEIDER       | 4     | 2-C |
| -U2   | EC  |        | 901643  | *1  | FREQUENCY CONVERTER, ATV12, 1-PHASE, 200-240VAC, WITH EMC FILTER          | ATV12H055M2TQ   | SCHNEIDER       | 5     | 2-C |
| -U3   | EC  |        | 901881  | *1  | FREQUENCY CONVERTER COMPACT, ATV320, 1-PHASE, 200-240VAC, WITH EMC FILTER | ATV320U07M2C    | SCHNEIDER       | 6     | 2-C |
| -U4   | EC  | TP     | 901643  | *1  | FREQUENCY CONVERTER, ATV12, 1-PHASE, 200-240VAC, WITH EMC FILTER          | ATV12H055M2TQ   | SCHNEIDER       | 7     | 2-C |
| -W1   | EC  |        | 751119  | *1  | POWER CABLE 1-PHASE W. CEE 7/7 -PLUG                                      | 751119          | CYKLOP          | 2     | 1-D |
| -W1   | EC  |        | 751112  | *1  | POWER SUPPLY CABLE 1-PHASE W. CEE-PLUG                                    | 751112          | CYKLOP          | 2     | 1-C |
| -X2   | EC  |        | 910111  | *1  | CLAMP BLOCK X2-3  | 910111          | PHOENIX CONTACT | 3     | 1-C |
| -X3   | EC  |        | 910111  | *1  | CLAMP BLOCK X2-3  | 910111          | PHOENIX CONTACT | 3     | 2-C |
| -X4   | EC  |        | 910112  | *1  | CLAMP BLOCK X4-7  | 910112          | PHOENIX CONTACT | 3     | 4-C |
| -X5   | EC  |        | 910112  | *1  | CLAMP BLOCK X4-7  | 910112          | PHOENIX CONTACT | 3     | 5-C |
| -X6   | EC  |        | 910112  | *1  | CLAMP BLOCK X4-7  | 910112          | PHOENIX CONTACT | 3     | 6-C |
| -X7   | EC  |        | 910112  | *1  | CLAMP BLOCK X4-7  | 910112          | PHOENIX CONTACT | 3     | 7-C |
| -B5   | MA  | OPTION | 901349  | *1  | INDUCTIVE SENSOR IM18 - M12 CONNECTOR                                     | IME18-05BPSZC0K | SICK            | 9     | 3-A |
| -B7   | MA  |        | 901349  | *1  | INDUCTIVE SENSOR IM18 - M12 CONNECTOR                                     | IME18-05BPSZC0K | SICK            | 9     | 4-A |
| -B8   | MA  |        | 900660  | *1  | PHOTOELECTRIC SENSOR - M12 CONNECTOR                                      | WT34-B410       | SICK            | 9     | 5-A |
| -B9   | MA  |        | 901349  | *1  | INDUCTIVE SENSOR IM18 - M12 CONNECTOR                                     | IME18-05BPSZC0K | SICK            | 9     | 6-A |
| -B10  | MA  |        | 901349  | *1  | INDUCTIVE SENSOR IM18 - M12 CONNECTOR                                     | IME18-05BPSZC0K | SICK            | 9     | 7-A |
| -B11  | MA  |        | 901349  | *1  | INDUCTIVE SENSOR IM18 - M12 CONNECTOR                                     | IME18-05BPSZC0K | SICK            | 9     | 7-A |
| -B21  | MA  | TP     | 901349  | *1  | INDUCTIVE SENSOR IM18 - M12 CONNECTOR                                     | IME18-05BPSZC0K | SICK            | 11    | 3-A |

|  |  |   |                              |                |
|--|--|---|------------------------------|----------------|
| <br>ISSUED BY CYKLOP TECHNIK AB |  | Design by RRU<br>Date 2018-02-23<br>Company<br>File name BOM1 | Drawn by LKA<br>Appr. by PWE | Funkt.<br>Loc. |
| STRETCH WRAPPER<br>CTT 210   |  | Pages 13 Page 12<br>Drawing no. 755098 Rev.                   |                              | B              |

|      |                    |       |      |
|------|--------------------|-------|------|
| Rev. | Change Description | Sign. | Date |
| 1    |                    |       |      |

| 1     | 2   | 3    | 4       | 5   | 6                                     | 7               | 8               |       |     |
|-------|-----|------|---------|-----|---------------------------------------|-----------------|-----------------|-------|-----|
| TAGS  | LOC | INST | PART NO | QTY | DESCRIPTION                           | CAT             | MANUFACTURER    | SHEET | REF |
| -B22  | MA  | TP   | 901349  | *1  | INDUCTIVE SENSOR IM18 - M12 CONNECTOR | IME18-05BPSZC0K | SICK            | 11    | 4-A |
| -B23  | MA  | TP   | 901349  | *1  | INDUCTIVE SENSOR IM18 - M12 CONNECTOR | IME18-05BPSZC0K | SICK            | 11    | 4-A |
| -M1   | MA  |      |         |     |                                       |                 |                 | 4     | 3-E |
| -M2   | MA  |      |         |     |                                       |                 |                 | 5     | 3-F |
| -M3   | MA  |      |         |     |                                       |                 |                 | 6     | 2-F |
| -M4   | MA  | TP   |         |     |                                       |                 |                 | 7     | 2-E |
| -S4   | MA  |      | 901148  | *1  | MOMENTARY SWITCH                      | 900148          | SAIA            | 9     | 2-B |
| -WB7  | MA  |      | CYKLOP  | *1  | SENSOR CABLE- SEE MECHANICAL DOC.     | CYKLOP          | CYKLOP          | 9     | 4-B |
| -WB8  | MA  |      | CYKLOP  | *1  | SENSOR CABLE- SEE MECHANICAL DOC.     | CYKLOP          | CYKLOP          | 9     | 5-B |
| -WB9  | MA  |      | CYKLOP  | *1  | SENSOR CABLE- SEE MECHANICAL DOC.     | CYKLOP          | CYKLOP          | 9     | 6-B |
| -WB10 | MA  |      | CYKLOP  | *1  | SENSOR CABLE- SEE MECHANICAL DOC.     | CYKLOP          | CYKLOP          | 9     | 7-B |
| -WB11 | MA  |      | CYKLOP  | *1  | SENSOR CABLE- SEE MECHANICAL DOC.     | CYKLOP          | CYKLOP          | 9     | 7-B |
| -WB21 | MA  | TP   | CYKLOP  | *1  | SENSOR CABLE- SEE MECHANICAL DOC.     | CYKLOP          | CYKLOP          | 11    | 3-B |
| -WB22 | MA  | TP   | CYKLOP  | *1  | SENSOR CABLE- SEE MECHANICAL DOC.     | CYKLOP          | CYKLOP          | 11    | 4-B |
| -WB23 | MA  | TP   | CYKLOP  | *1  | SENSOR CABLE- SEE MECHANICAL DOC.     | CYKLOP          | CYKLOP          | 11    | 4-B |
| -WM1  | MA  |      | 751108  | *1  | MOTOR CABLE                           | 751108          | CYKLOP          | 4     | 2-E |
| -WM2  | MA  |      | 751109  | *1  | MOTOR CABLE                           | 751109          | CYKLOP          | 5     | 2-E |
| -WM3  | MA  |      | 751110  | *1  | MOTOR CABLE                           | 751110          | CYKLOP          | 6     | 2-E |
| -WM4  | MA  | TP   | 751111  | *1  | MOTOR CABLE                           | 751111          | CYKLOP          | 7     | 2-E |
| -WS4  | MA  |      | CYKLOP  | *1  | SENSOR CABLE- SEE MECHANICAL DOC.     | CYKLOP          | CYKLOP          | 9     | 2-B |
| -WXB1 | MA  |      | 901652  | *1  | SACB-8/8-L-2,0PUR SCO P               | 1401382_2       | PHOENIX CONTACT | 9     | 1-C |
| -WXB2 | MA  | TP   | 901672  | *1  | SACB-4/4-L-5,0PUR SCO P               | 1452576B        | PHOENIX CONTACT | 11    | 2-C |
| -XB1  | MA  |      | 901652  | *1  | SACB-8/8-L-2,0PUR SCO P               | 1401382/2       | PHOENIX CONTACT | 9     | 2-B |
| -XB2  | MA  | TP   | 901672  | *1  | SACB-4/4-L-5,0PUR SCO P               | 1452576         | PHOENIX CONTACT | 11    | 3-B |

|   |  |           |            |                            |        |
|---|--|-----------|------------|----------------------------|--------|
| <br>ISSUED BY CYKLOP TEKNIK AB |  | Design by | RRU        | Drawn by                   | LKA    |
|   |  | Date      | 2018-02-23 | Appr. by                   | PWE    |
| Rev.   Change Description   |  | Company   |            | STRETCH WRAPPER<br>CTT 210 |        |
|   |  | Filename  | BOM2       | Drawing no.                | 755098 |
|   |  | Sign.     |            | Pages                      | 13     |
|   |  | Date      |            | Page                       | 13     |
|   |  |           |            | Rev.                       |        |



Praktyczne rozwiązania w systemach pakowania

DI-ZET Sp. J.  
Ul. Patriotów 24  
04-933 Warszawa

tel. 22/517-35-80/90  
e-mail: [di-zet@di-zet.pl](mailto:di-zet@di-zet.pl)