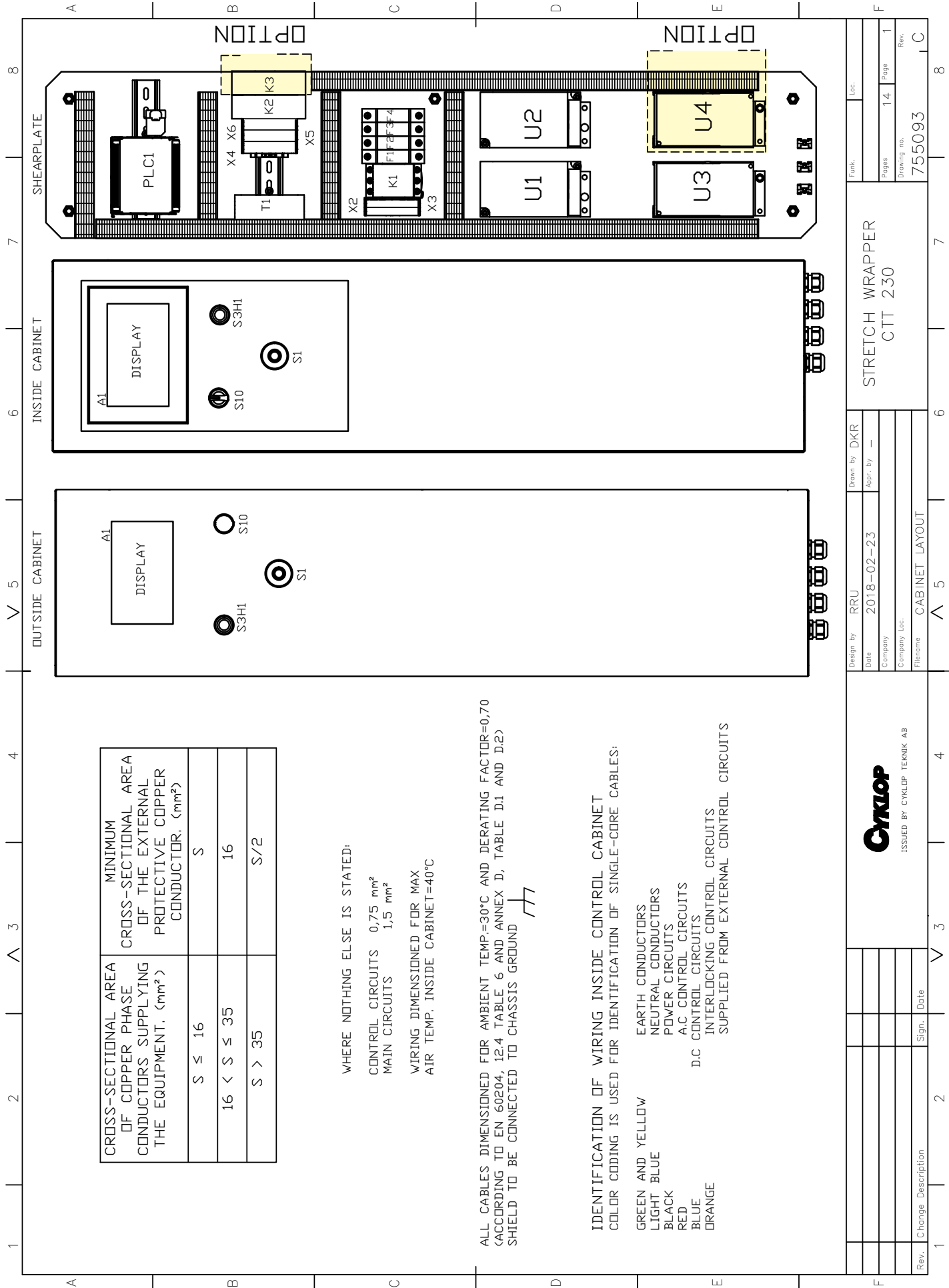




Wiring Diagram
CTT 230

rev. C



CROSS-SECTIONAL AREA OF COPPER PHASE CONDUCTORS SUPPLYING THE EQUIPMENT. (mm ²)	MINIMUM CROSS-SECTIONAL AREA OF THE EXTERNAL PROTECTIVE COPPER CONDUCTOR. (mm ²)
S ≤ 16	S
16 < S ≤ 35	16
S > 35	S/2

WHERE NOTHING ELSE IS STATED:
 CONTROL CIRCUITS 0,75 mm²
 MAIN CIRCUITS 1,5 mm²
 WIRING DIMENSIONED FOR MAX AIR TEMP. INSIDE CABINET=40°C

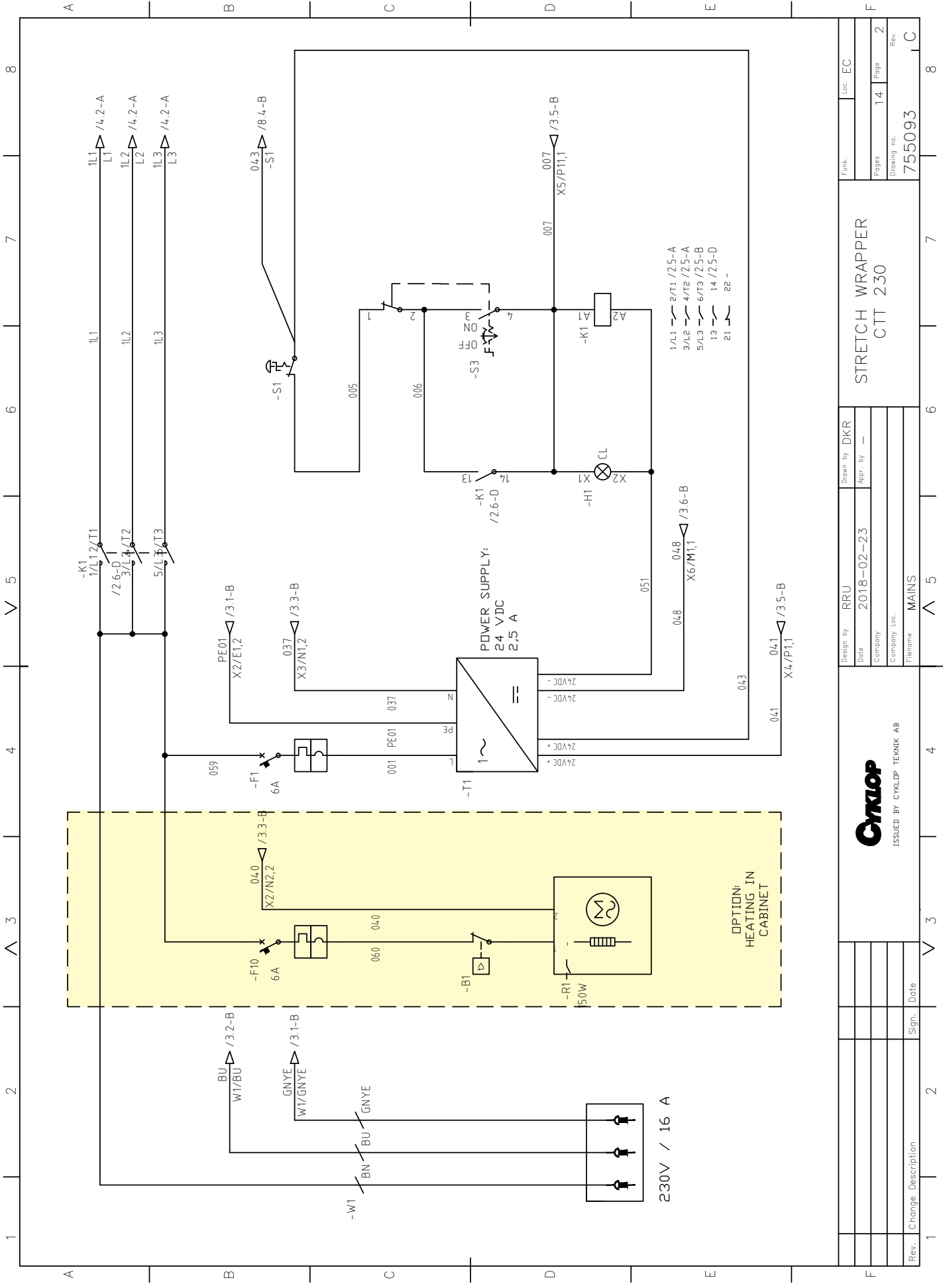
ALL CABLES DIMENSIONED FOR AMBIENT TEMP.=30°C AND DERATING FACTOR=0,70 (ACCORDING TO EN 60204, 12.4 TABLE 6 AND ANNEX D, TABLE D.1 AND D.2)
 SHIELD TO BE CONNECTED TO CHASSIS GROUND

IDENTIFICATION OF WIRING INSIDE CONTROL CABINET
 COLOR CODING IS USED FOR IDENTIFICATION OF SINGLE-CORE CABLES:

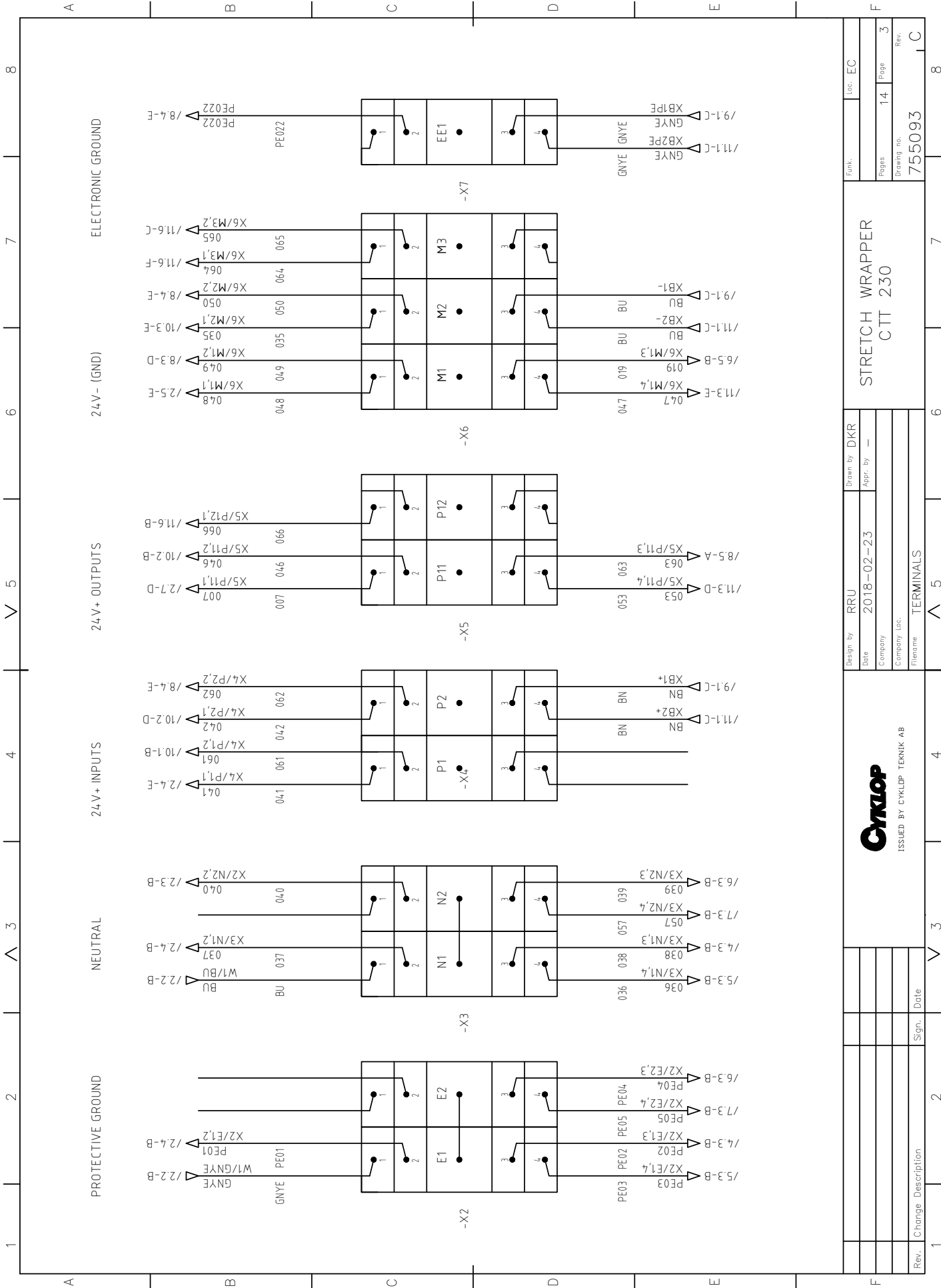
- GREEN AND YELLOW EARTH CONDUCTORS
- LIGHT BLUE NEUTRAL CONDUCTORS
- BLACK POWER CIRCUITS
- RED A.C CONTROL CIRCUITS
- BLUE D.C CONTROL CIRCUITS
- ORANGE INTERLOCKING CONTROL CIRCUITS

SUPPLIED FROM EXTERNAL CONTROL CIRCUITS

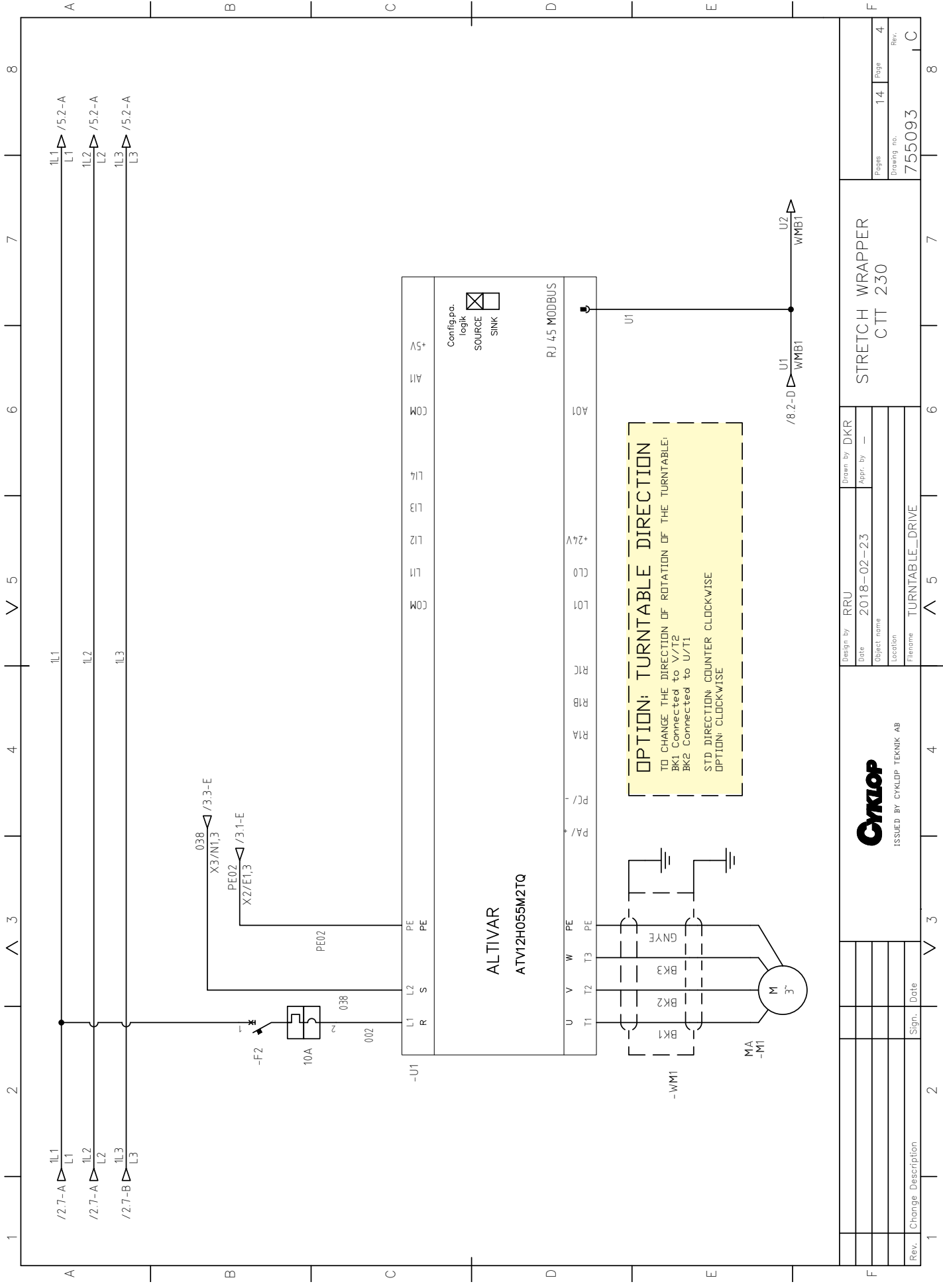
Cykolop		ISSUED BY CYKLOP TEKNIK AB	
Design by	RRU	Drawn by	DKR
Date	2018-02-23	Appr. by	—
Company		Company	
Filename	CABINET_LAYOUT	Company Loc.	
Rev.	Change Description	Pages	14
		Drawing no.	755093
		Rev.	C



Design by RRU		Drawn by DKR		Funk.		Loc. EC	
Date 2018-02-23		Appr. by -		Pages 14		Page 2	
Company		Company Loc.		Drawing no. 755093		Rev. C	
Filename MAINS		Mains		7		8	
ISSUED BY CYKLOP TECHNIK AB		STRETCH WRAPPER CTT 230		6		7	
1		2		3		4	
Rev. Change Description		Sign.		Date		Date	



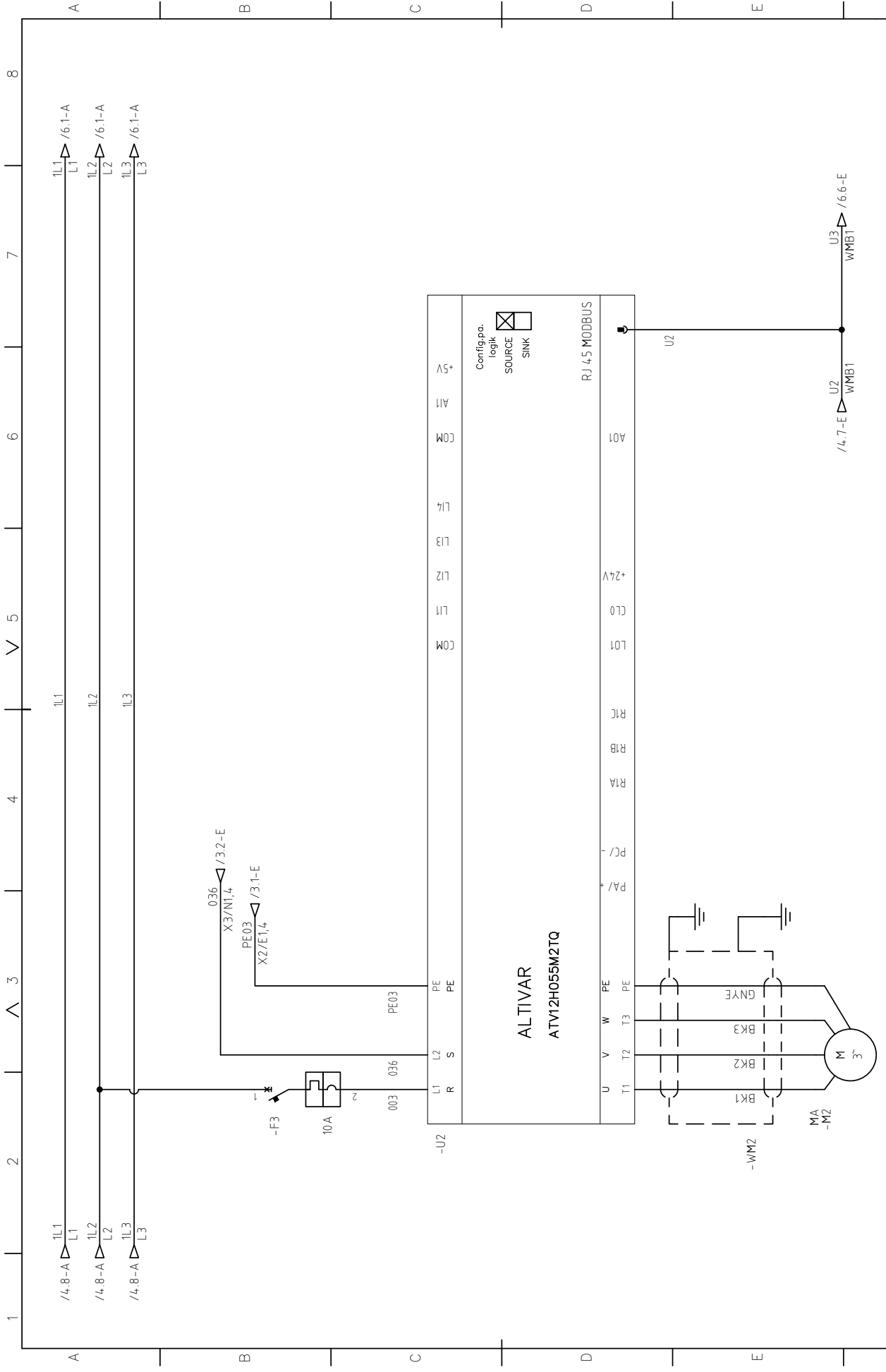
Design by RRU		Drawn by DKR		Funk.		Loc. EC	
Date 2018-02-23		Appr. by —		Pages 14		Page 3	
Company		Company		Drawing no. 755093		Rev. C	
Filename TERMINALS		Company Loc.		Stretch Wrapper		CTT 230	
Rev. 1 Change Description		Sign. Date		TERMINALS		755093	



Rev.	Change Description	Sign.	Date
1			
2			
3			
4			
5			
6			
7			
8			

Design by	RRU	Drawn by	DKR
Date	2018-02-23	Appr. by	—
Subject name			
Location			
Filename	TURNTABLE_DRIVE		

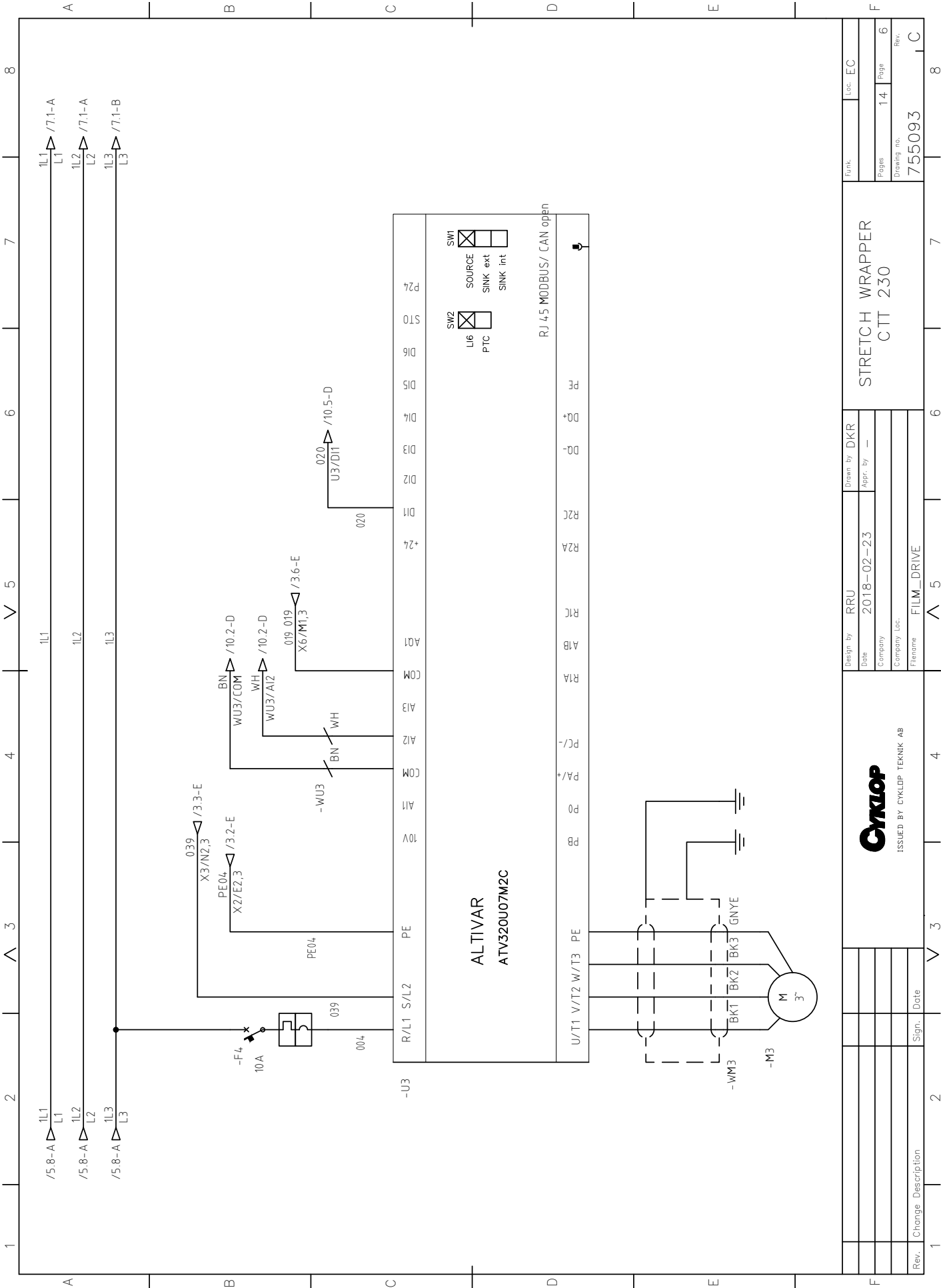
STRETCH WRAPPER C.TT 230	
Pages	14
Page	4
Drawing no.	755093
Rev.	C




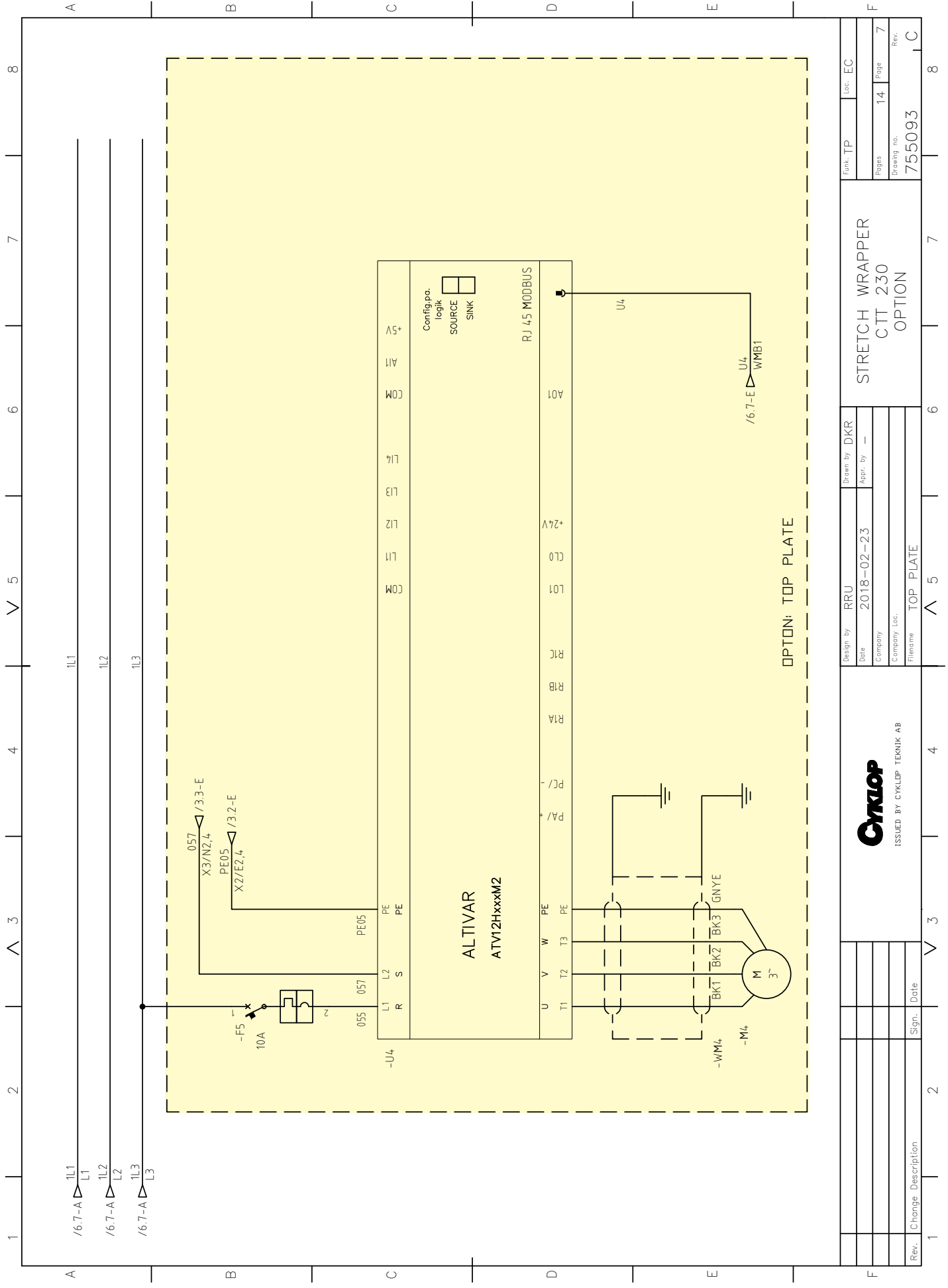
Rev.	Change Description	Sign.	Date
1			
2			
3			
4			
5			
6			
7			
8			

Design by	RRU	Drawn by	DKR
Date	2018-02-23	Appr. by	—
Object name			
Location			
Filename	CARRIAGE DRIVE		

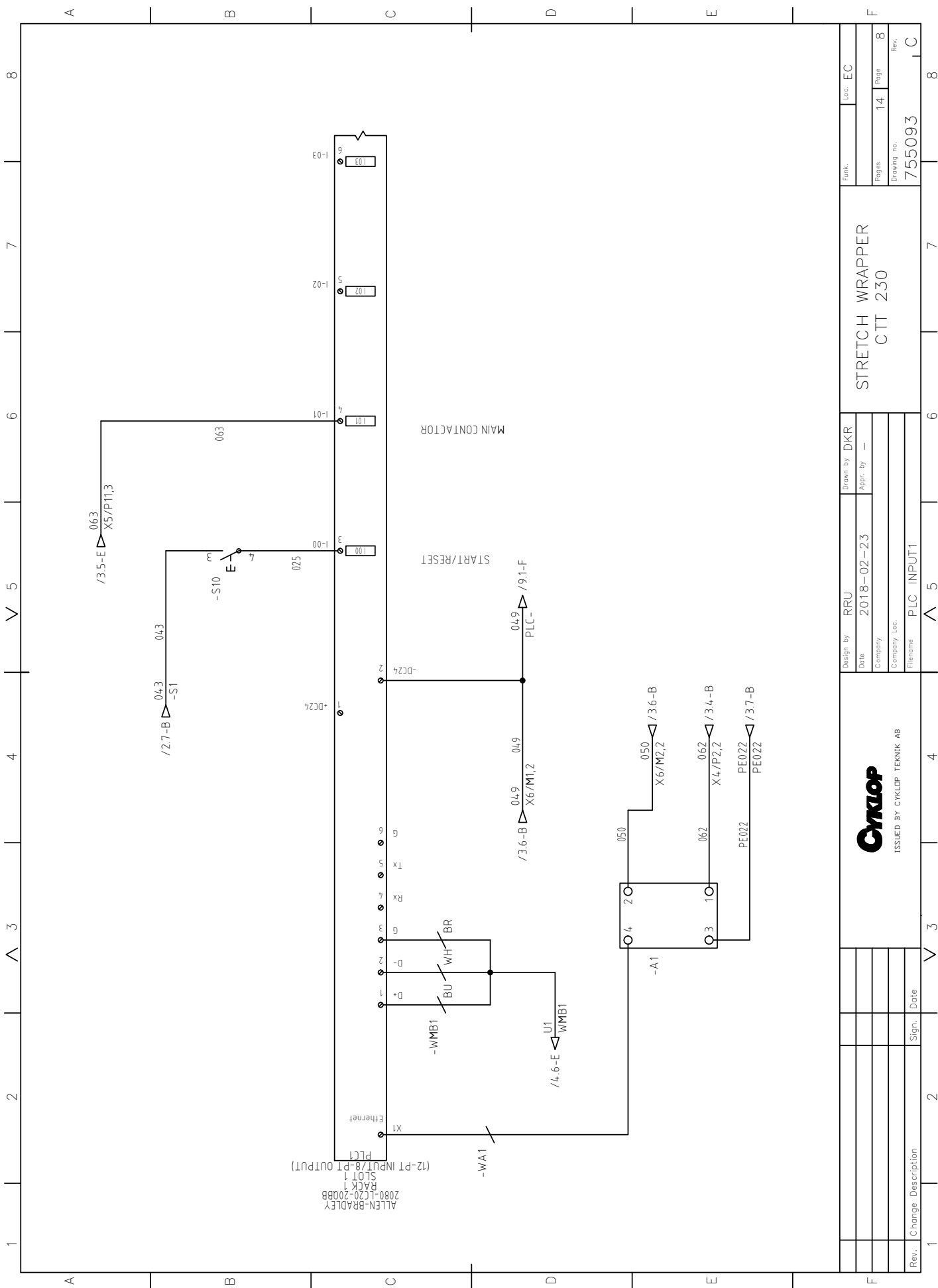
STRETCH WRAPPER	
C.TT 230	
Pages	14
Page	5
Drawing no.	755093
Rev.	C



Rev.	Change Description	Sign.	Date	1	2	3	4	5	6	7	8			
 ISSUED BY CYKLOP TECHNIK AB				Design by	RRU	Drawn by	DKR	STRETCH WRAPPER CTT 230				Funk.	Loc.	EC
Date	2018-02-23	Appr. by	—											
Company		Company												
Filename	FILM_DRIVE	Filename												
Pages	14	Page	6					Drawing no.	755093	Rev.	C			

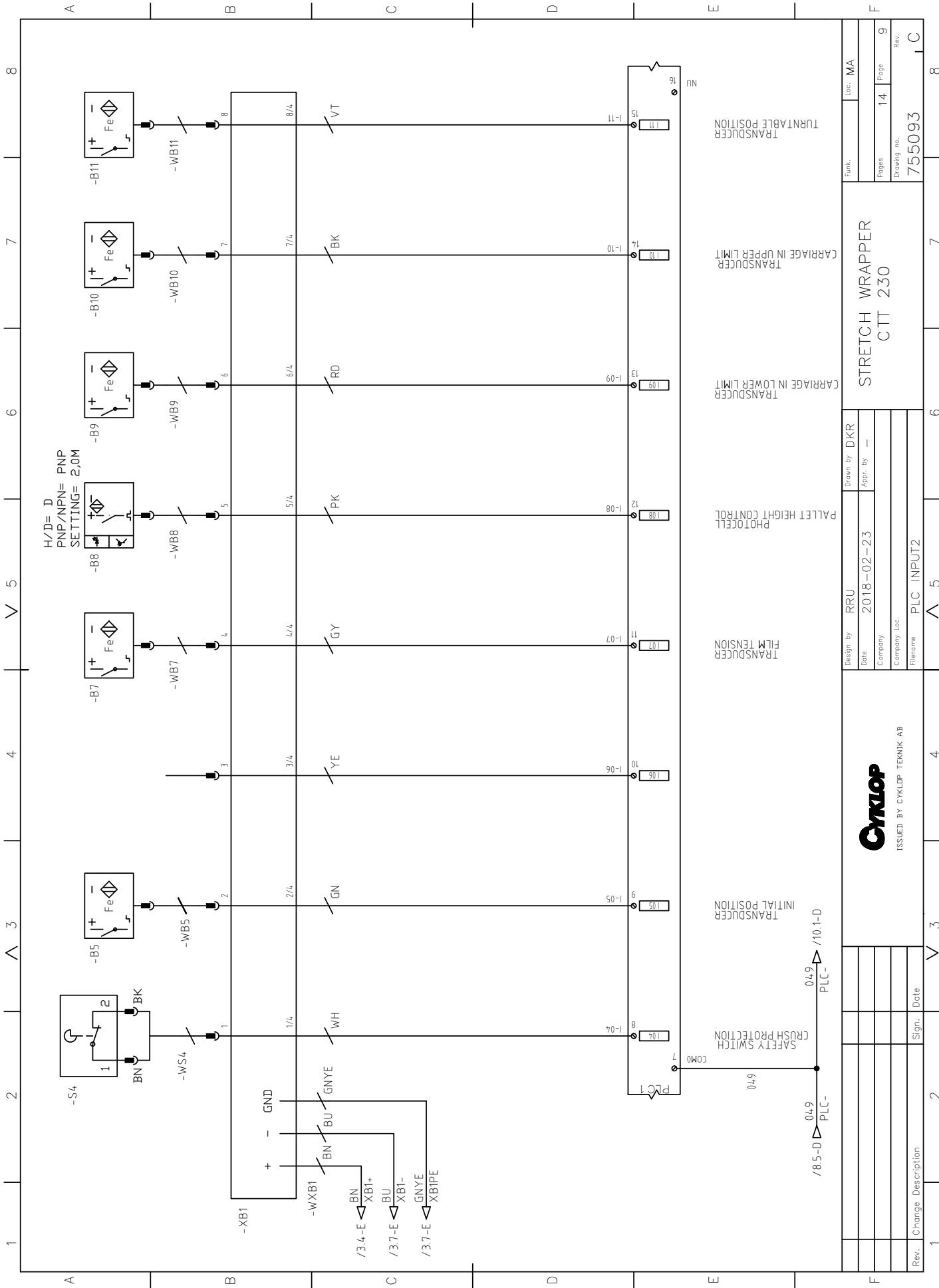


Rev.	Change Description	Sign.	Date	1	2	3	4	5	6	7	8
				Design by	RRU	Drawn by	DKR				
				Date	2018-02-23	Appr. by	—				
				Company							
				Filename	TOP PLATE						
								STRETCH WRAPPER		Loc. EC	
								C.TT 230		Pages 14	
								OPTION		Page 7	
								Drawing no.		Rev.	
								755093			



Rev.	Change Description	Sign.	Date	CYKLOP ISSUED BY CYKLOP TERNIK AB		Design by	RRU	Drawn by	DKR	Func.	Loc.	EC	
						Date	2018-02-23	Appr. by	—	Pages	14	Page	8
						Company		Company		Drawing no.	755093	Rev.	C
						Filename	PLC_INPUT1						

STRETCH WRAPPER
C/T 230



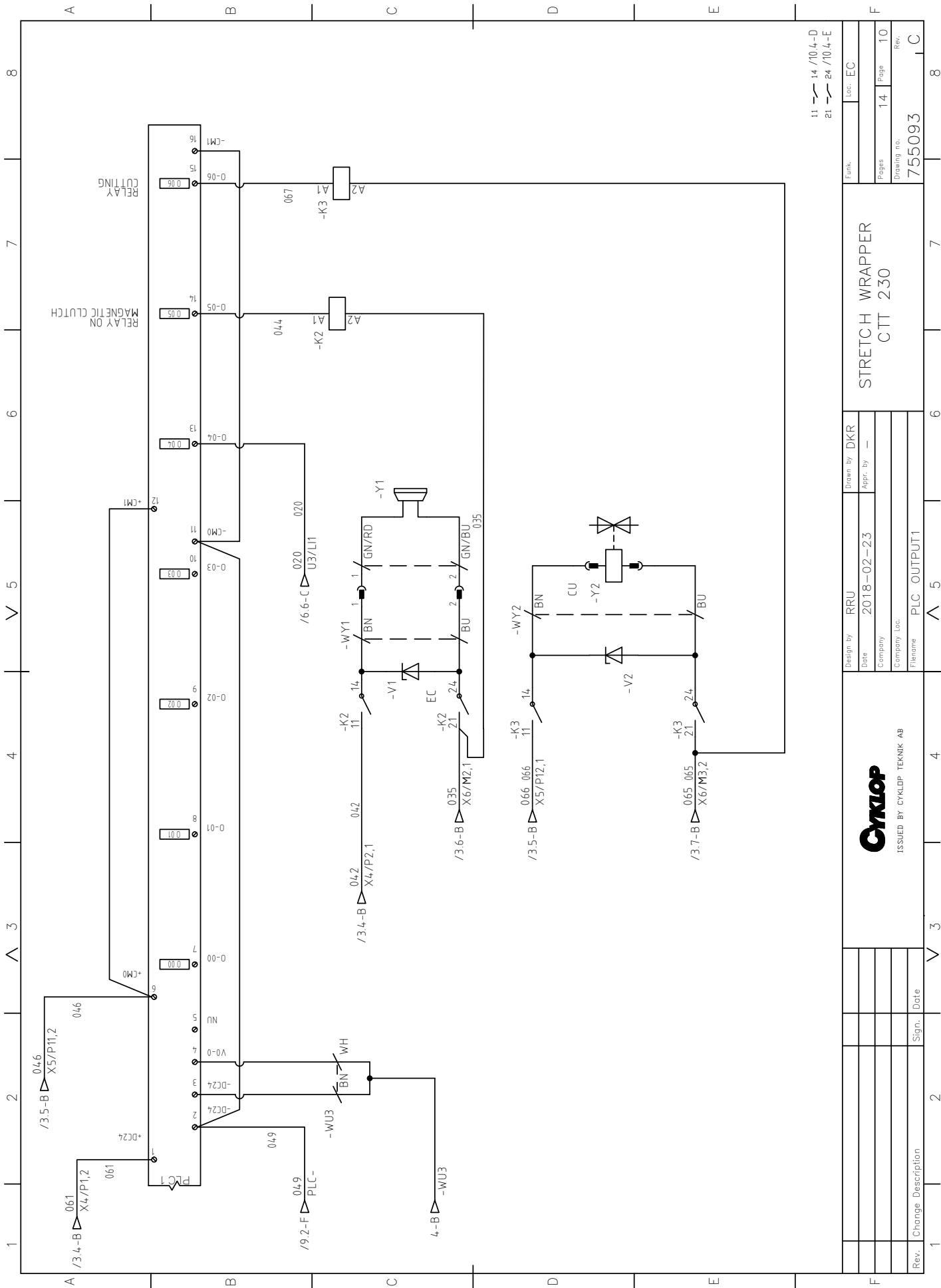
Rev.	Change Description	Sign.	Date



ISSUED BY CYKLOP TECHNIK AB

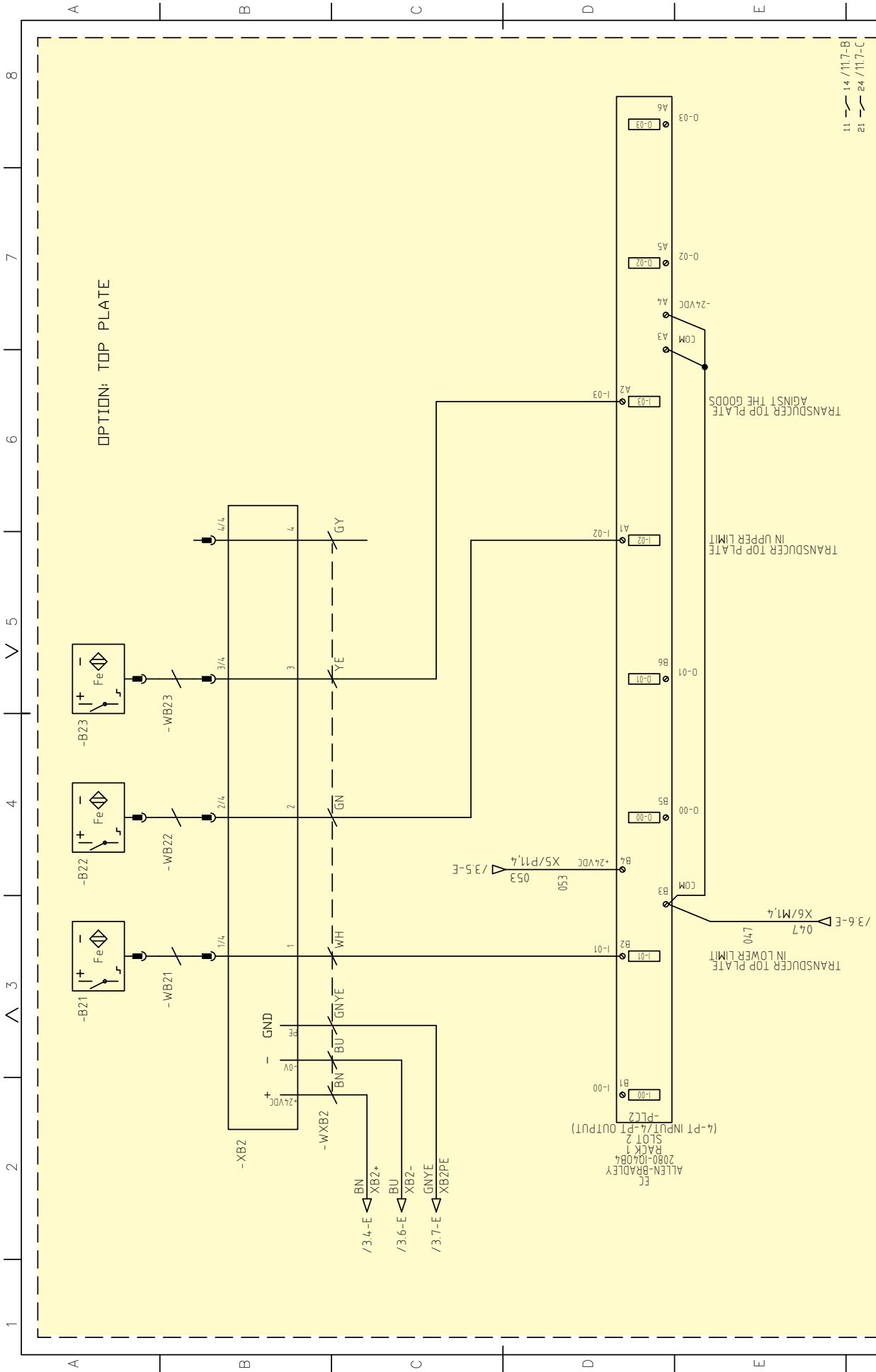
Design by	RRU	Drawn by	DKR
Date	2018-02-23	Appr. by	-
Company			
Company Loc.			
Filename	PLC_INPUT2		

STRETCH WRAPPER		Funk.	Loc.	MA
CIT 230				
Pages	14	Page	9	Rev.
Drawing no.	755093			



11 - 14 /10.4-D
21 - 24 /10.4-E


Design by	RRU	Drawn by	DKR	STRETCH WRAPPER		Funk.		Loc.		EC			
Date	2018-02-23	Appr. by	-	C.T.T 230		Pages		14		Page		10	
Company		Company		C.T.T 230		Drawing no.		755093		Rev.		C	
Company Loc.		Company Loc.		PLC OUTPUT1		Drawing no.		755093		Rev.		C	
Filename		Filename		PLC OUTPUT1		Drawing no.		755093		Rev.		C	




11 14 / 117-B
21 24 / 117-C


Rev.	Change Description	Sign.	Date
1			
Cykolp ISSUED BY CYKLOP, TECHNIK AB			
Design by	RRU	Drawn by	DKR
Date	2018-02-23	Appr. by	—
Company			
Filename	TOP_PLATE_I_O		
STRETCH WRAPPER CTT 230 OPTION		Func. TP	Loc. MA
Pages	14	Page	11
Drawing no.	755093	Rev.	

1	2	3	4	5	6	7	8		
TAGS	LOC	INST	PART NO	QTY	DESCRIPTION	CAT	MANUFACTURER	SHEET	REF
A									
-A1	EC		901646	*1	DISPLAY MT8050IE	MT8050IE	WEINTEK	1	5-C
-B1	EC	HEATER	901414	*1	THERMOSTAT NC	2579847	SCHNEIDER	8	3-E
-F1	EC		901049	*1	CIRCUIT BREAKER, C60N, 1P	24309	SCHNEIDER	2	3-D
-F10	EC	HEATER	901049	*1	CIRCUIT BREAKER, C60N, 1P	24309	SCHNEIDER	2	4-B
-F2	EC		901050	*1	CIRCUIT BREAKER, C60N, 1P	24310	SCHNEIDER	2	3-B
-F3	EC		901050	*1	CIRCUIT BREAKER, C60N, 1P	24310	SCHNEIDER	4	2-B
-F4	EC		901050	*1	CIRCUIT BREAKER, C60N, 1P	24310	SCHNEIDER	5	2-B
-F5	EC	TP	901050	*1	CIRCUIT BREAKER, C60N, 1P	24310	SCHNEIDER	6	2-B
-H1	EC		901260	*1	BODY FOR PILOT LIGHT - ZB5 - WHITE INTEGRAL LED - 24V	ZBVB15	SCHNEIDER	7	2-B
-K1	EC		901337	*1	CONTACTOR TESYS LC1-D - 3P - AC-3 440V 9A - COIL 24VDC	LC1D093BL	SCHNEIDER	2	5-D
-K2	EC		901274 901275	*1 *1	PLUGGABLE INDUSTRIAL RELAY INTERFACE RELAY	REL-IR/LDP-24DC/4X2 1AU PR2-BSP3/4X21	PHOENIX CONTACT PHOENIX CONTACT	10	7-D
-K3	EC	CU	901274 901275	*1 *1	PLUGGABLE INDUSTRIAL RELAY INTERFACE RELAY	REL-IR/LDP-24DC/4X2 1AU PR2-BSP3/4X21	PHOENIX CONTACT PHOENIX CONTACT	11	7-E
-PLC1	EC		901638	*1	MICROCONTROLLER 820	2080-LC20-20QBB	ALLEN-BRADLEY	8	1-C
-PLC2	EC	TP	901641	*1	8-POINT DIGITAL COMBINATION MODULE	2080-IQ40B4	ALLEN-BRADLEY	11	2-D
-R1	EC		901754	*1	PTC HEATING FAN 150W	CS 028	STEGO	2	3-D
-S1	EC		910051	*1	EMERGENCY STOP BUTTON	910051	SCHNEIDER	2	6-B
-S10	EC		910053	*1	PUSH BUTTON GREEN	910053	SCHNEIDER	8	5-B
-S3	EC		910101	*1	POWER ON	910101	CYKLOP	2	6-D
-T1	EC	CU	901645	*1	S8VK-C12024 TRAF0 120W-24V	375667	OMRON	2	4-C
-T1	EC		901644	*1	S8VK-C06024 TRAF0 60W-24V	375666	OMRON	2	4-C
-U1	EC		901643	*1	FREQUENCY CONVERTER, ATV12, 1-PHASE, 200-240VAC, WITH EMC FILTER	ATV12H055M2TQ	SCHNEIDER	4	2-C
-U2	EC		901643	*1	FREQUENCY CONVERTER, ATV12, 1-PHASE, 200-240VAC, WITH EMC FILTER	ATV12H055M2TQ	SCHNEIDER	5	2-C
-U3	EC		901881	*1	FREQUENCY CONVERTER COMPACT, ATV320, 1-PHASE, 200-240VAC, WITH EMC FILTER	ATV320U07M2C	SCHNEIDER	6	2-C
-U4	EC	TP	901643	*1	FREQUENCY CONVERTER, ATV12, 1-PHASE, 200-240VAC, WITH EMC FILTER	ATV12H055M2TQ	SCHNEIDER	7	2-C
-V1	EC		900082	*1	SUPPRESSOR S14K30	S14K30	EPCOS	10	4-D
-V2	EC	CU	900082	*1	SUPPRESSOR S14K30	S14K30	EPCOS	11	7-B
-W1	EC		751119	*1	POWER CABLE 1-PHASE W. CEE 7/7 -PLUG	751119	CYKLOP	2	1-D
-W1	EC		751112	*1	POWER SUPPLY CABLE 1-PHASE W. CEE-PLUG	751112	CYKLOP	2	1-C
-WA1	EC		901546	*1	ETHERNET CABLE	901546	CYKLOP	8	1-D
-WMB1	EC		751113	*1	MODBUS CABLE	751113	CYKLOP	8	2-C
-WU3	EC		900567	*1	MAGNETIC CLUTCH CABLE	0027441	LAPP	6	4-C
-WY1	EC		751114	*1	MAGNETIC CLUTCH CABLE	751114	CYKLOP	10	4-D
-X1	EC							10	4-D
-X2	EC		910111	*1	CLAMP BLOCK X2-3	910111	PHOENIX CONTACT	3	1-C

 ISSUED BY CYKLOP TEKNIK AB		Design by RRU Date 2018-02-23 Company File name BOM1	Drawn by DKR Appr. by -	STRETCH WRAPPER CTT 230	Funk. Loc.		
Rev. Change Description 1	2	3	4	5	6	7	8
Pages 14 Drawing no. 755093				Rev. C			

1	2	3	4	5	6	7	8		
TAGS	LOC	INST	PART NO	QTY	DESCRIPTION	CAT	MANUFACTURER	SHEET	REF
-X3	EC		910111	*1	CLAMP BLOCK X2-3	910111	PHOENIX CONTACT	3	2-C
-X4	EC		910112	*1	CLAMP BLOCK X4-7	910112	PHOENIX CONTACT	3	4-C
-X5	EC		910112	*1	CLAMP BLOCK X4-7	910112	PHOENIX CONTACT	3	5-C
-X6	EC		910112	*1	CLAMP BLOCK X4-7	910112	PHOENIX CONTACT	3	6-C
-X7	EC		910112	*1	CLAMP BLOCK X4-7	910112	PHOENIX CONTACT	3	7-C
-B10	MA		901349	*1	INDUCTIVE SENSOR IM18 - M12 CONNECTOR	IME18-05BPSZC0K	SICK	9	7-A
-B11	MA		901349	*1	INDUCTIVE SENSOR IM18 - M12 CONNECTOR	IME18-05BPSZC0K	SICK	9	7-A
-B21	MA	TP	901349	*1	INDUCTIVE SENSOR IM18 - M12 CONNECTOR	IME18-05BPSZC0K	SICK	11	3-A
-B22	MA	TP	901349	*1	INDUCTIVE SENSOR IM18 - M12 CONNECTOR	IME18-05BPSZC0K	SICK	11	4-A
-B23	MA	TP	901349	*1	INDUCTIVE SENSOR IM18 - M12 CONNECTOR	IME18-05BPSZC0K	SICK	11	4-A
-B5	MA	OPTION	901349	*1	INDUCTIVE SENSOR IM18 - M12 CONNECTOR	IME18-05BPSZC0K	SICK	9	3-A
-B7	MA		901349	*1	INDUCTIVE SENSOR IM18 - M12 CONNECTOR	IME18-05BPSZC0K	SICK	9	4-A
-B8	MA		900660	*1	PHOTOELECTRIC SENSOR - M12 CONNECTOR	WT34-B410	SICK	9	5-A
-B9	MA		901349	*1	INDUCTIVE SENSOR IM18 - M12 CONNECTOR	IME18-05BPSZC0K	SICK	9	6-A
-M1	MA							4	3-E
-M2	MA							5	3-F
-M3	MA							6	2-F
-M4	MA	TP						7	2-E
-S4	MA		901148	*1	MOMENTARY SWITCH	900148	SAIA	9	2-B
-WB10	MA		CYKLOP	*1	SENSOR CABLE- SEE MECHANICAL DOC.	CYKLOP	CYKLOP	9	7-B
-WB11	MA		CYKLOP	*1	SENSOR CABLE- SEE MECHANICAL DOC.	CYKLOP	CYKLOP	9	7-B
-WB21	MA	TP	CYKLOP	*1	SENSOR CABLE- SEE MECHANICAL DOC.	CYKLOP	CYKLOP	11	3-B
-WB22	MA	TP	CYKLOP	*1	SENSOR CABLE- SEE MECHANICAL DOC.	CYKLOP	CYKLOP	11	4-B
-WB23	MA	TP	CYKLOP	*1	SENSOR CABLE- SEE MECHANICAL DOC.	CYKLOP	CYKLOP	11	4-B
-WB7	MA		CYKLOP	*1	SENSOR CABLE- SEE MECHANICAL DOC.	CYKLOP	CYKLOP	9	4-B
-WB8	MA		CYKLOP	*1	SENSOR CABLE- SEE MECHANICAL DOC.	CYKLOP	CYKLOP	9	5-B
-WB9	MA		CYKLOP	*1	SENSOR CABLE- SEE MECHANICAL DOC.	CYKLOP	CYKLOP	9	6-B
-WM1	MA		751108	*1	MOTOR CABLE	751108	CYKLOP	4	2-E
-WM2	MA		751109	*1	MOTOR CABLE	751109	CYKLOP	5	2-E
-WM3	MA		751110	*1	MOTOR CABLE	751110	CYKLOP	6	2-E
-WM4	MA	TP	751111	*1	MOTOR CABLE	751111	CYKLOP	7	2-E
-WS4	MA		CYKLOP	*1	SENSOR CABLE- SEE MECHANICAL DOC.	CYKLOP	CYKLOP	9	2-B
-WXB1	MA		901635/ 1	*1	SACB-8/8-L 5,0PUR SCO P	1452699B	PHOENIX CONTACT	9	1-C
-WXB2	MA	TP	901672	*1	SACB-4/4-L 5,0PUR SCO P	1452576B	PHOENIX CONTACT	11	2-C
-WY2	MA	CU	900581	*1		0010021	LAPP	11	7-B
-XB1	MA		901635	*1	SACB-8/8-L-5,0PUR SCO P	1452699	PHOENIX CONTACT	9	2-B
-XB2	MA	TP	901672	*1	SACB-4/4-L-5,0PUR SCO P	1452576	PHOENIX CONTACT	11	3-B

		Design by RRU Date 2018-02-23 Appr. by - Company Company Loc. Filename BOM2		Drawn by DKR Date Appr. by - Company Company Loc. Filename BOM2		STRETCH WRAPPER CTT 230		Funk. Loc.	
Rev. Change Description		Sign. Date		Pages 14 Drawing no. 755093		Page 13 Rev.		8	

1	2	3	4	5	6	7	8		
TAGS	LOC	INST	PART NO	QTY	DESCRIPTION	CAT	MANUFACTURER	SHEET	REF
-Y1	MA		400327	*1	MAGNETIC CLUTCH COMBINORM-C	0703610	KEB	10	5-D
-Y2	MA	CU	901720	*1	SOLENOID	R273054	CYKLOP	11	7-B
 ISSUED BY CYKLOP TEKNIK AB									
Design by		RRU		Drawn by		DKR		Ins.	
Date		2018-02-23		Appr. by		-		Loc.	
Company		-		-		-		Pages	
Company Loc.		-		-		-		14	
Filename		BOM_3		-		-		Drawing no.	
-		-		-		-		755093	
Rev. Change Description		-		-		-		Rev.	
-		-		-		-		C	



Praktyczne rozwiązania w systemach pakowania

DI-ZET Sp. J.
Ul. Patriotów 24
04-933 Warszawa

tel. 22/517-35-80/90
e-mail: di-zet@di-zet.pl